

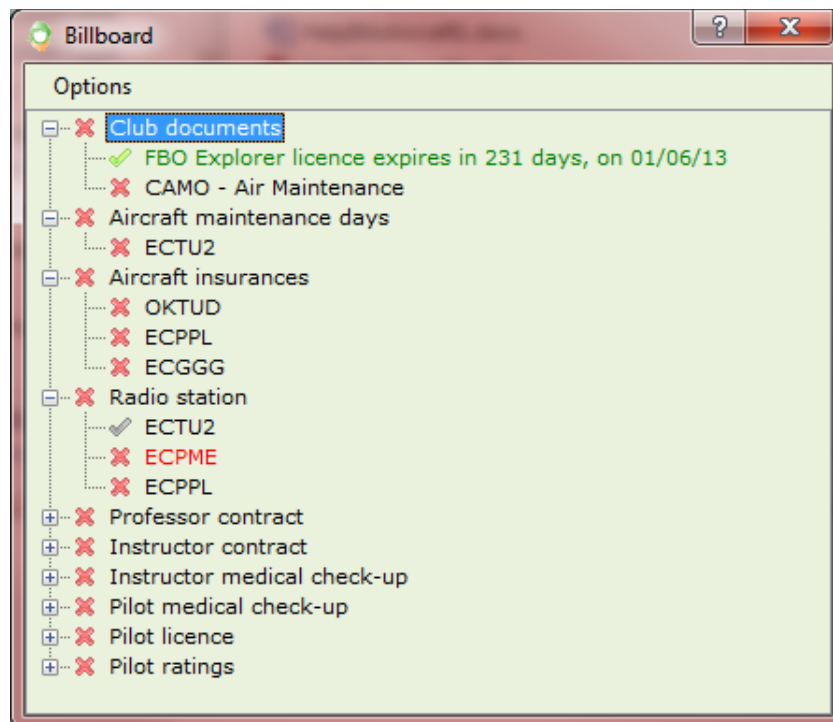
# Billboard

[Help bits](#)

## Overview

Billboard window pops up automatically before reaching the main menu, and highlights the situations ATO Explorer is constantly watching which should be amended.

This window is accessible only to users whose role allows doing so.



# Operation

This window shows its content in a tree view control, with nodes grouping same-type branches. A new node shows per each item outdated or close to being out of date of types:

- Club document
- Aircraft maintenance hours
- Aircraft maintenance days
- Aircraft insurance
- Aircraft aeronavigability certificate
- Aircraft radio station permit
- Aircraft Registration certificate
- Aircraft CAMO contract
- Professor labour contract
- Instructor labour contract
- Instructor medical check-up
- Instructor licence
- Instructor rating
- Pilot medical check-up
- Pilot licence
- Pilot rating
- Pilot federative licence
- Pilot language certificate
- Pilot account balance

(In this case, when pilot's balance is less than the established value in preferences window)

- Overlapping flights (if they exist, over the last year)

(To obtain the list of overlapped flights, please build the overlapped flights report from the management reports window or double-click this node)

The indicator visible in each node is the worst one of the indicators shown in branches hanging from it.

Except for the branch in 'Club documents' node which informs about the FBO licence remaining days, the other indicators can be these two only:

 About to expire

 Expired

By double-clicking a branch opens the window related to it.

